

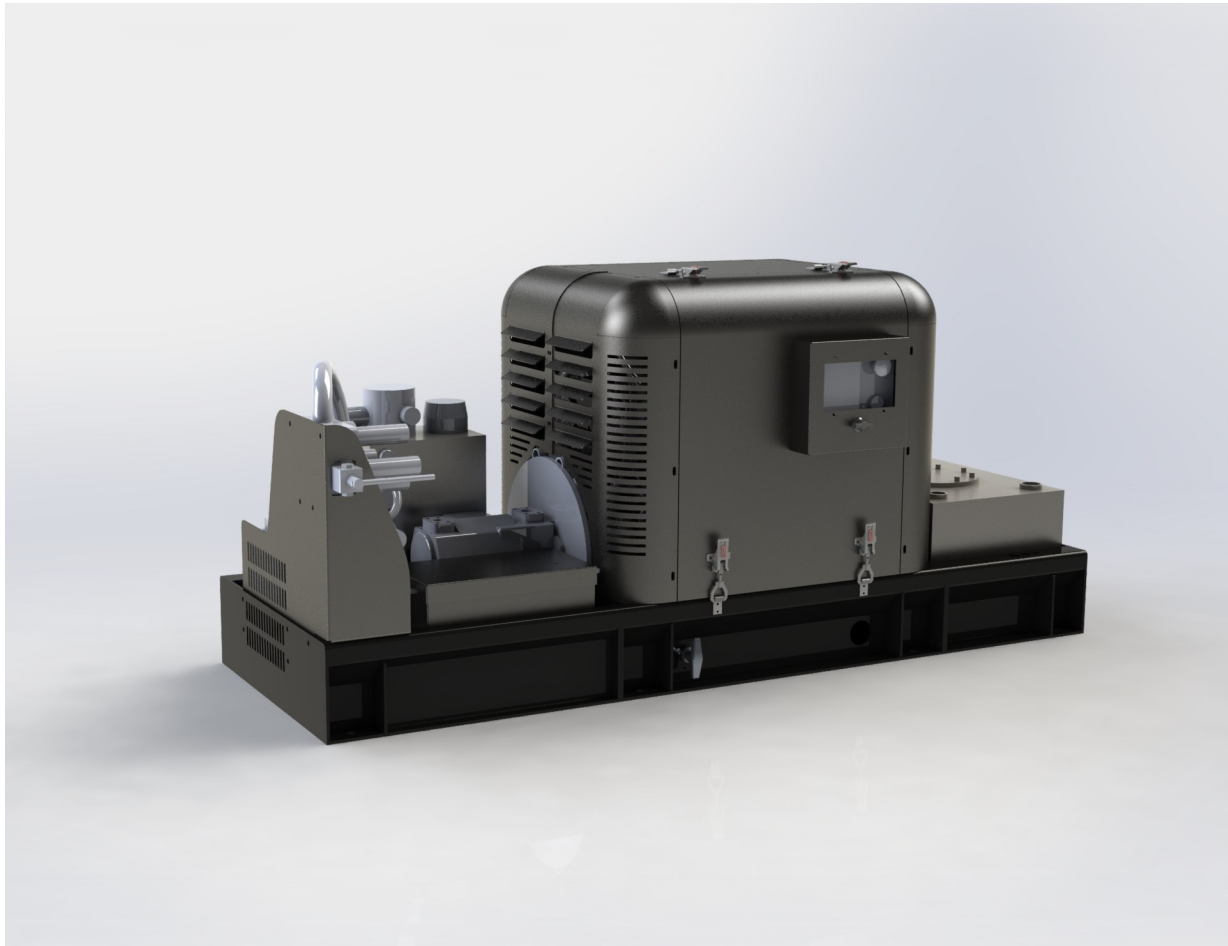


**TRANSAIRVAC**  
INTERNATIONAL LTD

## TIER V COMPLIANT CATEGORY NRE - V/L-2 DIESEL ENGINE VACUUM TANK- ER PACKAGE TDVP520

Efficiency, performance and EU TIER V compliant 2019 - onwards

This package is designed to achieve a compromise between performance, cost, effectiveness and compliance with the changes in EU regulations, whilst maintaining high quality standards, low maintenance and longevity. This has been achieved by selecting an engine that does not include a DPF (Diesel Particulate Filter), this elevates the maintenance and downtime associated, this package is fully equipped for driving the vacuum pump hydraulically using the engine as a hydraulic powerpack. This gives flexibility to mount each component of the system in a more accessible position on the tank to aid in the operation and maintenance of the equipment.



**TRANSAIRVAC**  
INTERNATIONAL LTD



# TIER V COMPLIANT CATEGORY NRE - V/L-2 DIESEL ENGINE VACUUM TANKER PACKAGE TDVP520

## FEATURES

---

### VACUUM PUMP: Jurop RV520

Dual fan air cooling  
Incorporated lubricating pump  
Incorporated check valve  
Incorporated change-over valve automatic (Hydraulically operated)  
High efficiency Parker piston motor

*Note: Other Applications can be driven with this package by altering the hydraulic components in the drive line please speak to our engineers who will advise.*

### Engine: STS silent pack TIER V Engine (No DPF)

Stainless Steel Acoustic Enclosure Mounted To Frame To House All Components Required For Ease Of Installation And Maintenance.  
SAE 5-6 1/2 Flywheel  
Control panel with tachometer, hour run meter and fuel level gauge  
12V Electric Start  
Exhaust silencer  
Automatic inlet shutdown (overspeed)  
Spark arrestor (exhaust side)  
40LT STS Fuel Tank (60LT Available On Request)  
120AH Battery Enclosed in STS Battery Box  
Battery Isolator  
All Serviceable Items Relocated To Accessible Points  
Added Flexibility Of Being Able To Drive Vacuum Pump Via Tractor Unit Hydraulics If Required.

**Emissions compliance:**  
Category NRE - V/L-2 (EU TIER V)

### Options / Accessories:

Primary shut-off valve  
Secondary shut-off valve  
Ball valves  
Knife Gate Valves  
Air safety filter  
Vacuum relief valve  
Pressure relief valve  
24V Electric start  
Ancillary hydraulics for rear door opening / clamps operation  
Bespoke system / package design is available upon request.

## Technical Specifications

---

Flow rate	700M3/hr (415CFM)
Pressure discharge max	1Bar(G)
Vacuum max	-0.9BAR(G) 90%
Running speed (Vacuum mode)	1100RPM
Running speed (Pressure mode)	725RPM
Engine speed	2800RPM
Engine cylinders	3
Engine displacement	1028cm3
Cooling method	Liquid
Engine noise level	72db(a) @7M

---



Unit 28, Croft Road Industrial Estate,  
Newcastle-under-Lyme,  
Staffordshire,  
ST5 0TW  
Tel: 01782 710282  
Email: office@transairvac.com  
Website: www.transairvac.com