



**BETICO**<sup>®</sup>

PISTON COMPRESSORS  
**SERIE SB**



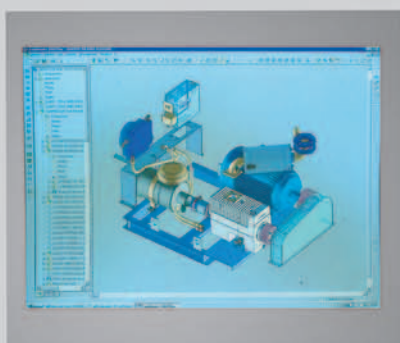
# Experience, technology and quality



## Experience

At BETICO we have been designing and building top-quality air compressors since 1925.

The SB series, low-pressure piston compressors are especially designed to provide fast, trouble-free pneumatic transport of granulates and powdered products. Admitted quality, reliability and excellent after-sales support provide BETICO compressors with a reputation which is hard to improve.



## Design and technology

The latest computer-assisted industrial design systems, the result of continuous investments in R&D aimed at exploring new ideas, has put BETICO at the forefront of the compressed air industry. We are constantly seeking new ways of meeting our customers' changing needs within an increasingly sophisticated industrial environment, in which efficiency and energy savings are paramount.



## Total quality

Our facilities in Vitoria have been certified at ISO-9001 TOTAL QUALITY, which includes all production processes. Our staff's commitment to continuous improvement ensures total quality in the design, development and production of all BETICO compressors.

# Serie SB — reliability and profitability



## SB-SD acoustically enclosed diesel engine compressor package

- **Fully compliant with sound emission standards.**

Thanks to the extensive experience of BETICO in the design of acoustically enclosed diesel compressors, the company has developed this new compressor which complies with the new OUTDOOR EUROPEAN NOISE EMISSION DIRECTIVE CEE 2000/14, and is compliant with the directives planned for 2006.

This compressor can operate without creating a disturbance in residential areas and even in the vicinity of hospitals.

- **Bodywork.**

The bodywork is protected against the most adverse conditions, being treated with epoxy-painted, oven-dried, hot galvanised steel sheets.

Its compact design with internal reinforcements, guarantees sturdiness and lightness (strong and light) maintaining its aesthetic appearance for many years.

- **Totally “ self contained”**

The unit has all the necessary elements required to operate autonomously.

Complete with control panel, safety valve and pulsation damper, totally built into the package.

- **Easily accessible**

All areas that require maintenance are easily accessible.

- **Air-cooled engines- simply the best**

The simplest solutions are often the best, as the Deutz air-cooled engines have shown over recent years. They are the ideal solution for the severe working conditions prevalent on building sites (dust, cold and extreme heat, etc.).

- **They comply with the strictest exhaust emission standards.**

The high technology of Deutz, world leader in medium range engines allow them to be the only manufacturer capable of offering a wide range of air-cooled engines that comply with the new exhaust emission standards.

# Flexibility and easy assembly



## Diesel powered

Totally autonomous motor-compressor, driven directly by a diesel engine coupled to the compressor to make a single, robust, compact assembly.

Equipped with a control panel, battery with safety lock, diesel oil tank, frame, body, etc.



## Belt drive

Compressor with a fly-wheel pulley for operating from a truck PTO.

This compressor should be mounted on the top part of the tractor frame. It is very easy to mount as you only need to attach the compressor to the truck, install a pulley on the truck's PTO and join it to the compressor using belts.



## Hydraulic drive

Motor compressor assembly, driven directly by a hydraulic motor, coupled to the compressor to make a single, robust, compact assembly. Equipped with a cooler for the hydraulic oil circuit and a fan driven by the compressor crankshaft.

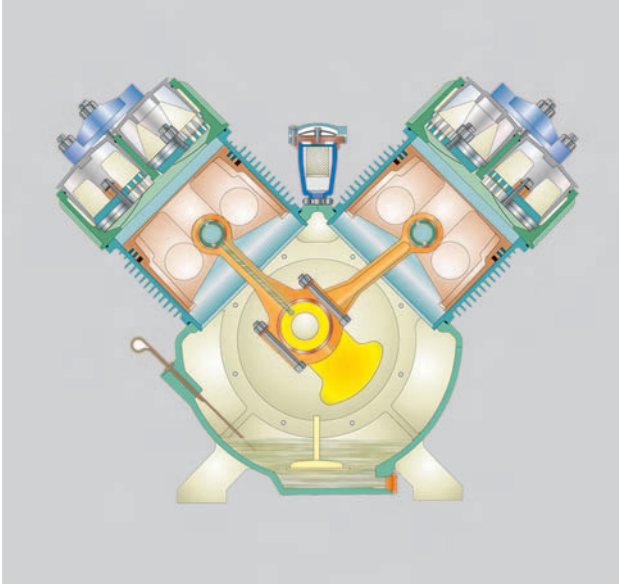
This is the ideal solution when you require a good autonomy-weight ratio and the truck is equipped with a pump.



## Electric motor driven

Motor compressor assembly, driven directly by an electric motor coupled to the compressor. It is equipped with a control panel, and a regulator is available when long periods of operation at a constant working pressure are required. This is the most suitable solution for mounting on trucks, when electrical current is available, and for permanent installations in all types of industries.

# Technology and quality



## Low-pressure, High-Performance, Highly-Reliable Lubricated Sb Compressors

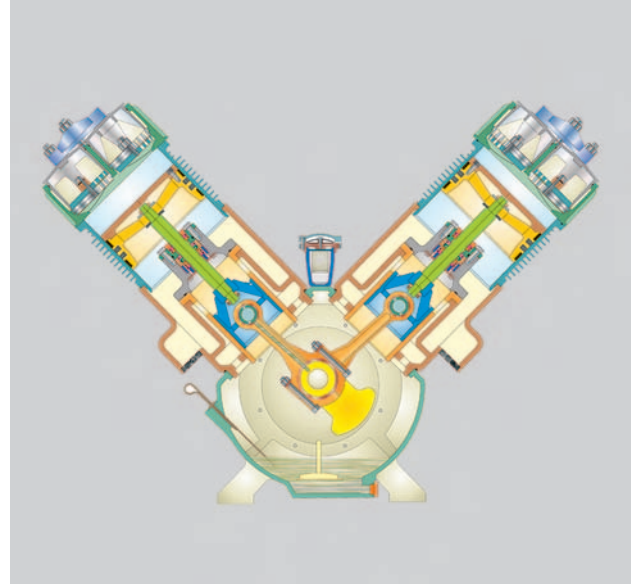
The SB series compressors are single-stage piston compressors. Their simple, robust design makes them most suitable for transporting aggregates in dusty environments.

Top quality materials provide thousands of hours of trouble-free operation with oil changes as the only maintenance required, even if small quantities of granulate enter through the suction filters.

Thanks to its modular design, there is a model suitable for every pneumatic transportation need for the following products:

- Cement
- Gypsum
- Sand
- Borax, etc.

In general, they are suitable for any type of pneumatic transport in which small amounts of oil are admissible in the compressed air.



## Low-pressure, High-performance, Oil-Free Sb-j Compressors

The SB series compressors are single-stage piston compressors which require NO OIL in the compression chamber, thereby supplying completely oil-free compressed air.

A special one-piece crosshead and piston rod design make this a truly compact compressor with perfect piston alignment.

Oversized, top quality oilseals provide thousands of working hours, completely OIL-FREE performance.

Low operation speed, robust design and top quality parts and manufacture mean the SB-J series offers unparalleled reliability for this type of compressor.

This range of compressors is ideal for conveying any type of material where you need an absolute guarantee of an OIL-FREE compressed air, such as:

- Flours
- Cereals
- Feed
- Plastics, etc.

# Téchnical characteristics

## TÉCHNICAL CHARACTERISTICS

MODEL	Speed r.p.m.	Flow m³/min	Pressure bar	Motor	Consumption Kw	Dimensions mm.	Weight Kg.
<b>P.T.O. DRIVEN</b>							
SB-1	1.000	5,8	2		15,4	1.070x625x790	230
SB-1	1.500	8,7	2		24,2	1.070x625x790	230
SB-2	1.000	7,38	2		20,6	1.070x625x798	230
SB-2	1.200	8,8	2		24,7	1.070x625x798	230
<b>DIESEL DEUTZ ENGINE DRIVEN</b>							
SB-D	1.800	8,9	2	F-3L912	24,3	1.450x980x1.144	680
SB-SD (*)	1.800	8,9	2	F4L-2011	24,3	2000x1050x1200	972
SB-3D	1.500	14,6	2	F-6L912	48,4	2.180x1.220x1.300	1.200
<b>HIDRAULIC MOTOR DRIVEN</b>							
SB-1H	1.800	10,4	2		28	1.081x1.070x860	350
<b>50 HZ. ELECTRIC MOTOR DRIVEN</b>							
SB-10	1.000	5,8	2	18,5	15,4	1.455x1.070x885	480
SB-15	1.500	8,7	2	30	24,2	1.455x1.070x885	460
SB-20	1.000	7,3	2	22	20,6	1.455x1.070x890	520
SB-30	1.000	11,6	2	37	30,5	1.870x1.220x990	800
SB-35	1.500	17,4	2	55	48,4	1.870x1.220x990	760
SB-40	1.000	14,6	2	45	40,4	1.870x1.220x995	875
<b>60 HZ. ELECTRIC MOTOR DRIVEN</b>							
SB-10	1.200	7	2	18,5	18,5	1.455x1.070x885	480
SB-20	1.200	8,7	2	30	24,7	1.455x1.070x890	560
SB-30	1.200	13,9	2	37	36,6	1.870x1.220x990	800
SB-40	1.200	17,5	2	55	48,5	1.870x1.220x995	850
<b>"OIL FREE"</b>							
SB-10J	1.000	5,5	2	18,5	16,2	1.485x1.340x990	600
SB-30J	1.000	11	2	37	32	1.869x1.340x980	1.050



**MIGUEL CARRERA Y CIA, S.A.**

Member of the BETICO Group

Plaza de Gamarra, 43 – 01013 VITORIA-SPAIN

Tel. (+34) 945 12 83 83\* - Fax: (+34) 945 28 26 30/945 26 02 88

Internet: [www.betico.com](http://www.betico.com)

Given the continuing evolution of our products, the data in this catalogue may be modified without prior notification and it does not therefore imply any commitment or warranty on the part of MIGUEL CARRERA y CIA., S.A.

It is owned by Miguel Carrera y Cia. S. A. Their reproduction